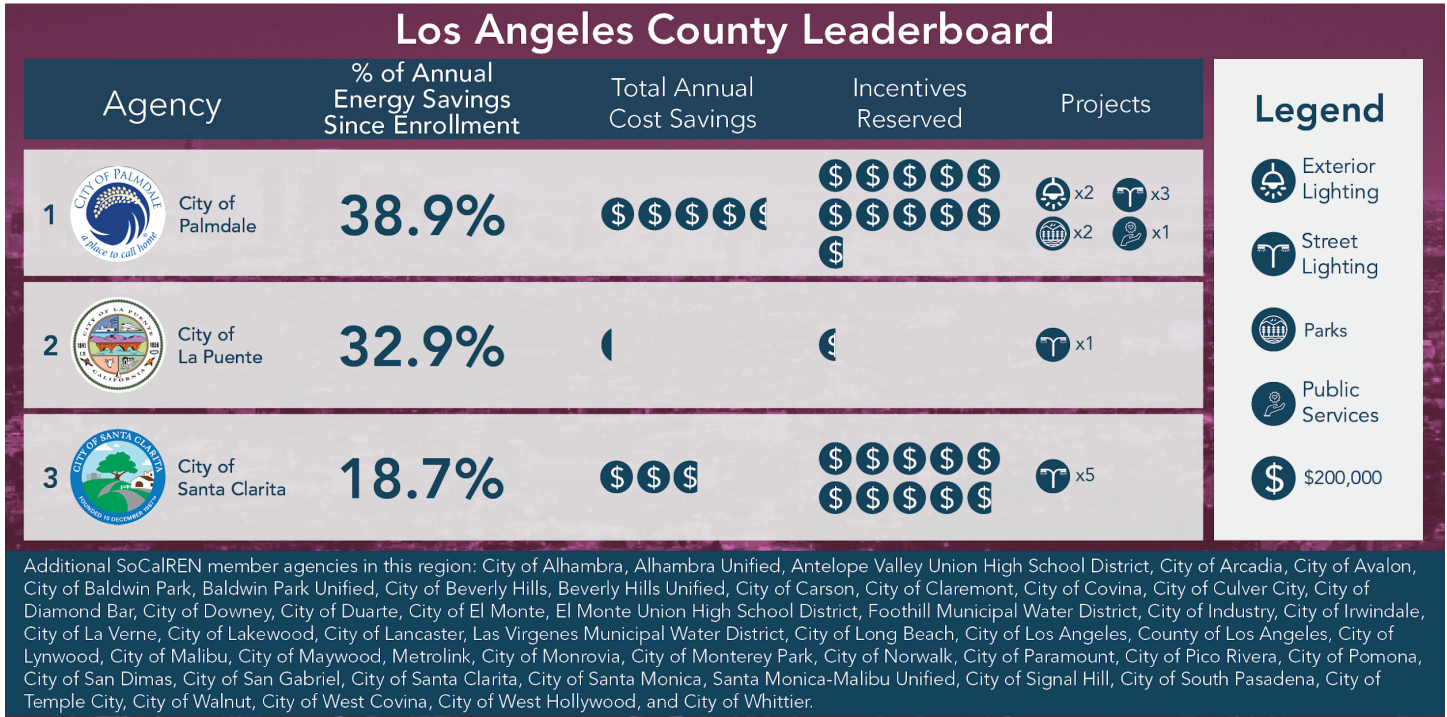
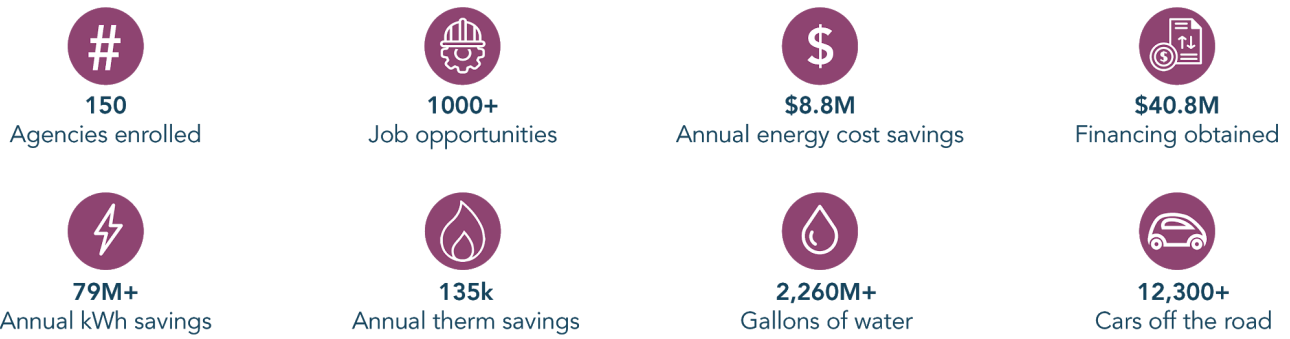


The SoCalREN Public Agency Programs were created on the belief that public agencies can be powerful agents of change. Energy conservation at the local level gives communities direct, tangible benefits in the form of freed-up public resources. Take a look at what agencies enrolled in SoCalREN Public Agency Programs accomplished together as a Network, and thanks again for joining us and making an impact.



Note: % of Annual Energy Savings Since Enrollment includes projects that are completed based on construction end date.

Overall Impacts on Communities Served



Note: overall impacts determined based on energy savings and assumed benefits per kWh/therm reduced.

Below is a personalized status update for the City of La Verne. Since the enrollment of La Verne in May 2019, SoCalREN Public Agency Programs have worked with the City to improve its energy efficiency and save money. To date, this collaboration has saved 4.8% of overall electric energy usage¹.

Opportunities for Success



Status	Lighting	Mechanical	Pumping	Street Lighting	Cost Savings*	Energy Savings*	Incentives
In Progress	-	1 Project 5 Facilities	1 Project	-	\$50,985 Annual	463,502 kWh 3,700 Therms Annual	-
Completed	1 Project 5 Facilities	-	-	1,907 Lamps	\$40,768 Annual	370,400 kWh Annual	\$194,137 Saved
Total	1 Project 5 Facilities	1 Project 5 Facilities	1 Project	1,907 Lamps	\$91,753 Annual	833,902 kWh 3,700 Therms Annual	\$194,137 Saved

*Cost and energy savings are potential, based on each project's incentives estimates, completed audit or the SoCalREN Public Agency Programs project scoping tool

Key Project Milestones

Key Milestones	La Verne LS-1 Streetlights	La Verne Various Buildings MPOP	La Verne Various Facilities Whole Building	La Verne Pumping Process Optimization
Energy Cost Savings	\$40,484	\$284	TBD	TBD
Comparative Energy Analysis	Done	Done	Done	Done
Energy Audit	Done	Done	Done	Done
Incentives & Funding Reserved	Done	Done	TBD	TBD
Design & Proposal	Done	Done	TBD	TBD
Council/Board Approval	Done	Done	TBD	TBD
Construction Start	Done	Done	TBD	TBD
Construction End	Done	Done	TBD	TBD
Incentives & Funding Received	Done	Done	TBD	TBD

¹ These percentages are based on agency wide annual energy consumption at enrollment.