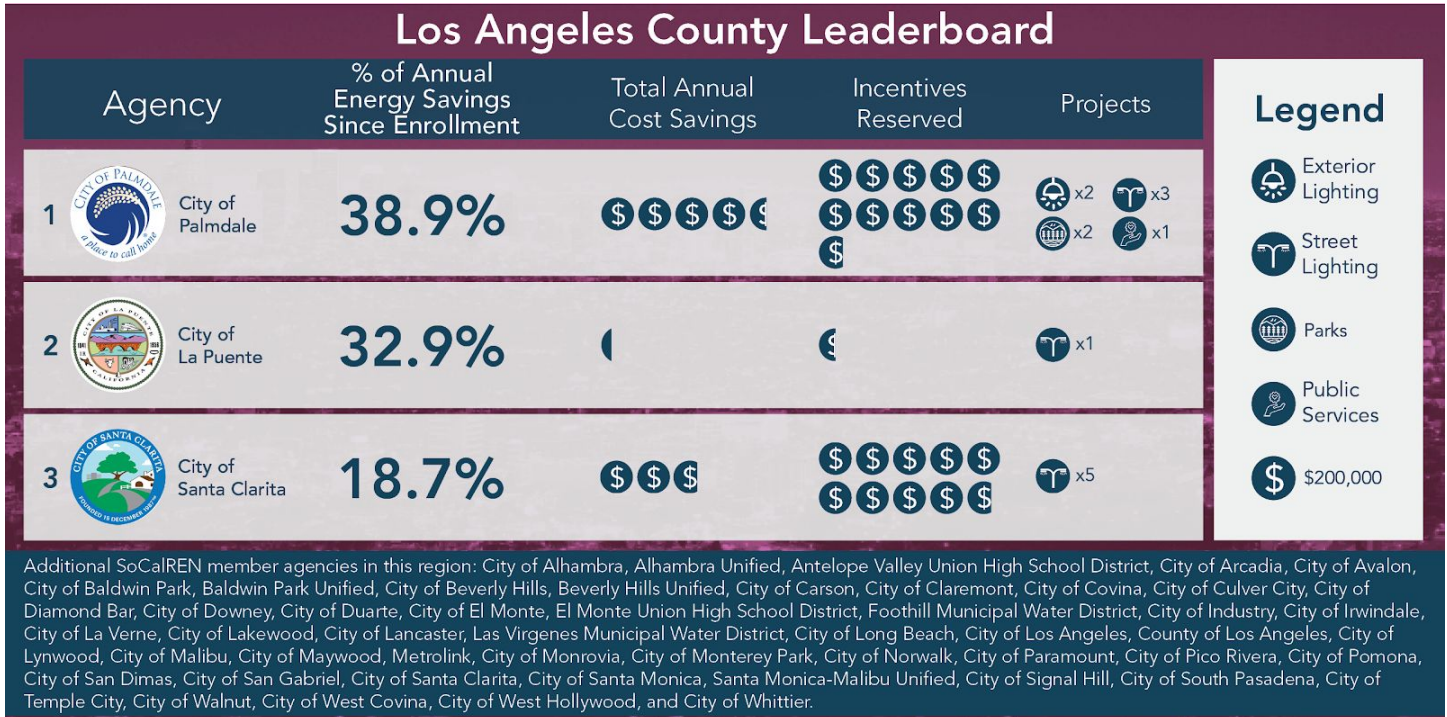
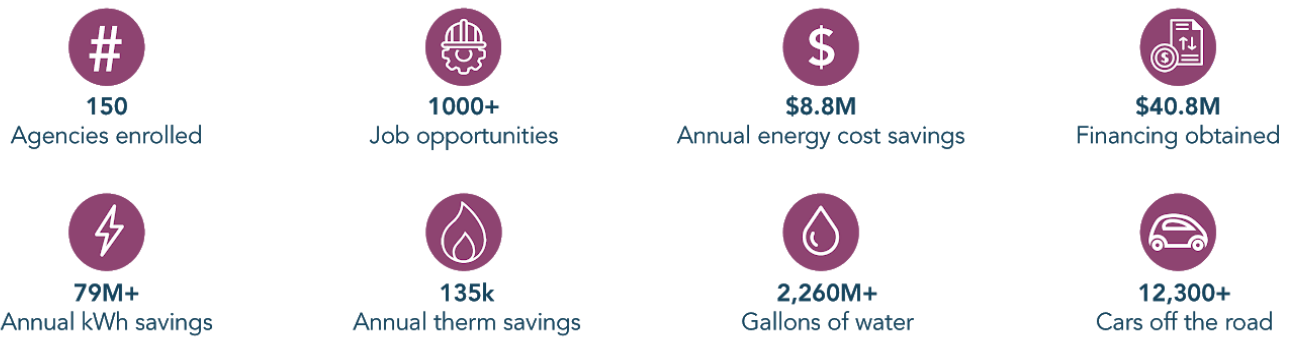


The SoCalREN Public Agency Programs were created on the belief that public agencies can be powerful agents of change. Energy conservation at the local level gives communities direct, tangible benefits in the form of freed-up public resources. Take a look at what agencies enrolled in SoCalREN Public Agency Programs accomplished together as a Network, and thanks again for joining us and making an impact.



Note: % of Annual Energy Savings Since Enrollment includes projects that are completed based on construction end date.

## Overall Impacts on Communities Served



Note: overall impacts determined based on energy savings and assumed benefits per kWh/therm reduced.

Below is a personalized status update for the City of Long Beach. Since the enrollment of Long Beach in March 2014, SoCalREN Public Agency Programs have worked with Long Beach to improve its energy efficiency and save money. To date, this collaboration is saving the City over 7 million kWh annually<sup>1</sup>.

### Opportunities for Success



Status	Lighting	Whole Building	Street Lighting	Cost Savings*	Energy Savings*	Incentives	Financing
Planned	-	3 Projects	-	TBD	TBD	TBD	TBD
In Progress	1 Project	5 Projects	-	TBD	~620,000 kWh	~\$99,000	TBD
Completed	9 Projects	-	5 Projects	\$900,000 Annual	7,600,000 kWh Annual	\$3M	\$5.8 M On-Bill Financing
<b>Total</b>	<b>10 Projects</b>	<b>8 Projects</b>	<b>5 Projects</b>	<b>\$900,000 Annual</b>	<b>8,220,000 kWh Annual</b>	<b>\$3.1M</b>	<b>\$5.8 M On-Bill Financing</b>

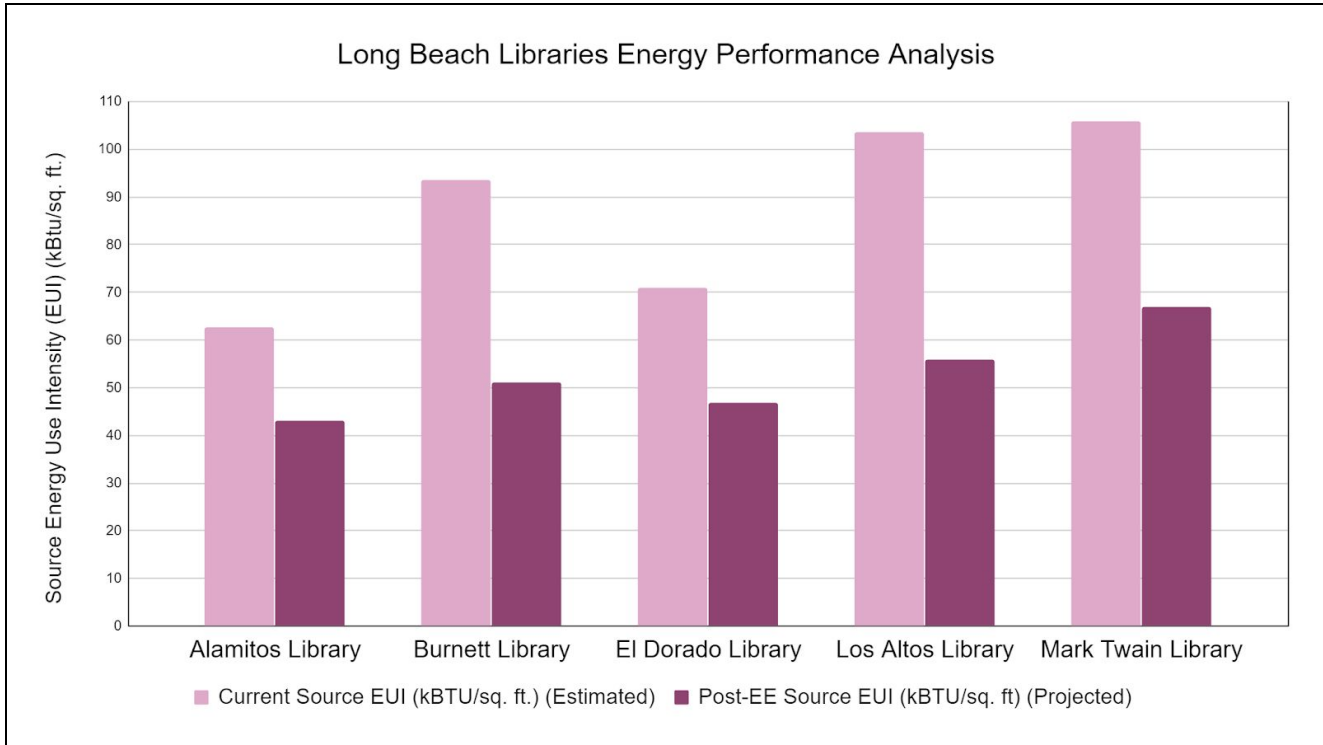
\*Cost and energy savings are potential, based on each project's incentives estimates, completed audit or the SoCalREN Public Agency Programs project scoping tool

### Key Project Milestones

Key Milestones	El Dorado Library	Alamitos Library	Los Altos Library	Burnett Library	Mark Twain Library	Convention Center Parking Garage and Interior Lighting
Energy Cost Savings	<i>Complete!</i>	<i>Complete!</i>	<i>Complete!</i>	<i>Complete!</i>	<i>Complete!</i>	<i>Complete!</i>
Comparative Energy Analysis	<i>Complete!</i>	<i>Complete!</i>	<i>Complete!</i>	<i>Complete!</i>	<i>Complete!</i>	<i>Complete!</i>
Energy Audit	<i>Complete!</i>	<i>Complete!</i>	<i>Complete!</i>	<i>Complete!</i>	<i>Complete!</i>	<i>Complete!</i>
Incentives & Funding Reserved	October 2020	October 2020	October 2020	October 2020	October 2020	October 2020
Design Complete	November 2020	November 2020	December 2020	December 2020	November 2020	December 2020
Council/Board Approval	January 2021	January 2021	February 2021	February 2021	January 2021	January 2021
Construction Start	February 2021	February 2021	March 2021	March 2021	February 2021	February 2021
Construction End	April 2021	April 2021	May 2021	May 2021	April 2021	April 2021
Incentives & Funding Received	August 2021	August 2021	September 2021	September 2021	August 2021	August 2021

<sup>1</sup> These percentages are based on agency wide annual energy consumption at enrollment.

Long Beach Libraries Energy Star Portfolio Manager (ESPM) Facility Snapshot



Metric	Alamos Library	Burnett Library	El Dorado Library	Los Altos Library	Mark Twain Library
Current Source <sup>2</sup> EUI (kBTU/sq. ft.) (Estimated)	62.6	93.6	71	103.5	106
Post-EE Source EUI (kBTU/sq. ft.) (Projected)	43.1	51.1	46.9	55.9	66.9
Current % Variance from National Median (Estimated)	56.4%	34.8%	50.6%	27.9%	26.2%
Post-EE % Variance from National Median (Projected)	70.0%	64.4%	67.3%	61.1%	53.4%

Implementing energy efficiency upgrades at the above properties will result in reduced energy use intensity (EUI) at all sites. In addition, the above projects will save an estimated 87,000 lbs of CO<sub>2</sub> annually<sup>3</sup>.

<sup>2</sup> Source Energy Use Intensity (EUI) is a standardized measurement of a facility's energy use, including energy loss due to transmission and distribution from the source.

<sup>3</sup> GHG emissions metrics were estimated using the conversion: 517 lb CO<sub>2</sub>/MWh.