

Photo: Entrance to Cardiff Parking Structure

Situation Analysis

About the Project

In February of 2020, Culver City completed a lighting retrofitting project to provide LED upgrades to their Cardiff Parking Structure.

The project met the eligibility requirements to participate in SoCalREN's Metered Savings program, including savings of more than 10% kWh at the meter, which opened access to SoCalREN's full suite of project delivery services (see below). By participating in the **Metered Savings Program**, the City will also receive post-implementation support from SoCalREN including energy usage tracking after installation to ensure persistent energy savings.

No-Cost Metered Savings Program Services Utilized



Project Management



Technical Review



Sourcewell Construction Services



Financial Analysis



Audit/ Calculations



Design/ Scope of Work

Project Outcomes



7

Cars taken off the road



\$7,500+

Annual cost savings



52,000+ kWh

Annual energy savings

“ Absent SoCalREN's involvement, the number of energy efficiency projects implemented would be dramatically reduced. SoCalREN's free and unbiased energy efficiency project evaluation and project management services fulfill a role that in-house staff does not have the time to do themselves.

-Joe Susca
Senior Management Analyst, Culver City ”

Project Summary

- **Completion Date:** February 2020
- **Facility:** Cardiff Parking Structure; a 5-level parking structure located in downtown Culver City
- **Construction Timeline:** 1 week
- **Lighting Upgrade:** Type B LED lighting
- **# of Upgrades:** 400
- **Estimated Useful Life:** 50,000 hours
- **Lifetime Cost Savings:** \$142,000+ (energy costs and maintenance savings)

Benefits to the Public

The upgrades made to the City's Cardiff Parking Garage bring significant benefits to the public. Since the parking garage is located in Culver City's popular downtown area, and largely used by patrons from nearby restaurants and the ArcLight theater, it is usually occupied by many vehicles every day of the week. The light fixture upgrades made the parking areas brighter and easier to see, ultimately increasing the safety for anyone parking in the garage.

Before...

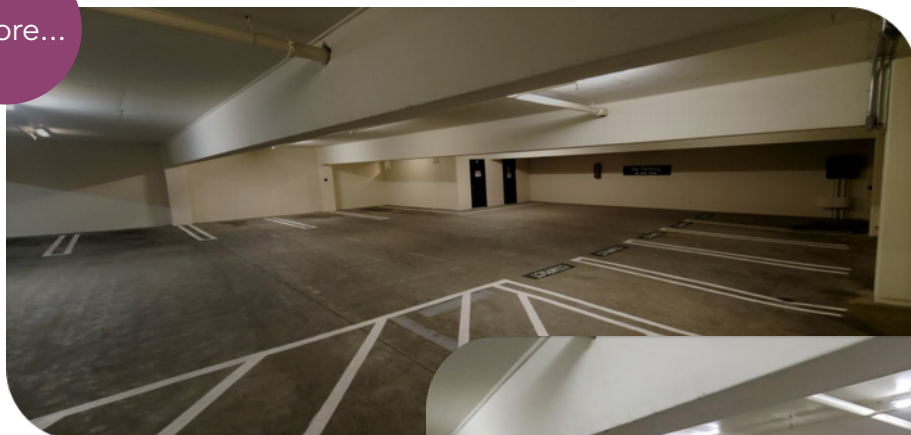
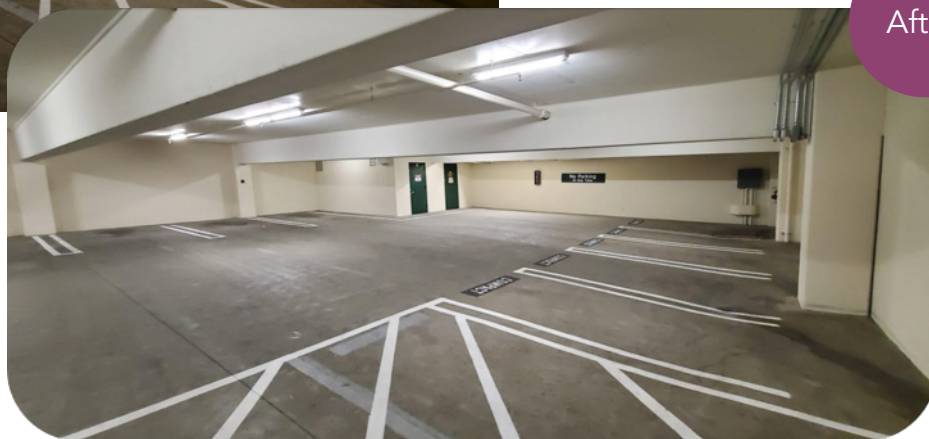


Photo: Cardiff Parking Structure Level 1

After!



About Culver City

Culver City is a five-square-mile urban community in Los Angeles County. It is known as a center for movie and television production and currently occupies the MGM lot. Culver City is also known for its thriving night life scene and sophisticated art galleries. Culver City is a leader when it comes to community resiliency and sustainability. The City has completed many energy efficiency upgrades to several of their facilities, and has been recognized through Beacon Awards, Cool Planet Awards, and Platinum SCE Energy Leader status.